

Quick Reference Guide

 **Skytrofa® Auto-Injector**

For SKYTROFA cartridges

Single-patient use

Watch Video



www.skytrofa.com

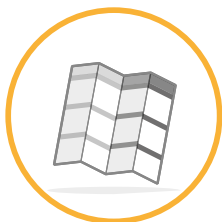


This is your Quick Reference Guide

- For full instructions, read your Instructions for Use
- For training video, go to **www.skytrofa.com**
- If you are unsure about your dose, contact your healthcare provider.



Instructions
for Use



**Quick
Reference Guide**



www.skytrofa.com

Training
Video

Ascendis Pharma Customer Support



1-844-44ASCENDIS
(1-844-442-7236)

Parts overview

Green Top

Starts injection when pressed against skin

Inspection Window

Allows for inspection of mixed medicine

Progress Bar

Shows progress of mixing and injection

Status Icons

- ✓ **Green check mark**
Injection successfully completed
- 👁 **Green eye**
Mixed medicine is ready for inspection in window
- 🔄 **Green mixing**
Medicine mixing is in progress

Green Button

To turn on the SKYTROFA Auto-Injector or to reject mixed medicine

Needle

SKYTROFA Cartridge

Contains medicine and water for injection

Battery Icon



Constant green

- ➡ Battery is fully charged
- ➡ The SKYTROFA Auto-Injector is ready to use



Flashing green

- ➡ At least 1 injection remaining, but charging recommended after use



Flashing red

- ➡ Battery needs charging



Prepare

1

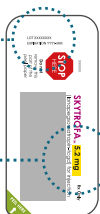
Check and assemble cartridge and needle

1.1

Check expiration date and cartridge dose on cartridge pack.

Expiration date
YYYY - MM
year month

Cartridge dose



1.2

Check expiration date on needle.

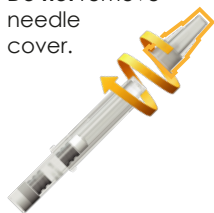
Expiration date
YYYY - MM - DD
year month day

Remove paper from needle.



1.3

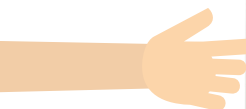
Screw needle straight and tightly on cartridge. **Do not** remove needle cover.




2

Turn on the auto-injector

Press and release the green button to turn on the auto-injector.



(You will hear **2** loud beeps. Battery icon  will light up and green top will start flashing)

3

Insert cartridge


3.1

Insert cartridge into flashing green top.



3.2

Click cartridge in place.

(Green top will stop flashing, mixing icon  will light up, and battery icon will switch off)



3.3

After click, remove finger from cartridge.



Mix

4

Wait while mixing

Wait 4 to 8 minutes for the auto-injector to mix medicine.

Watch progress bar gradually light up.



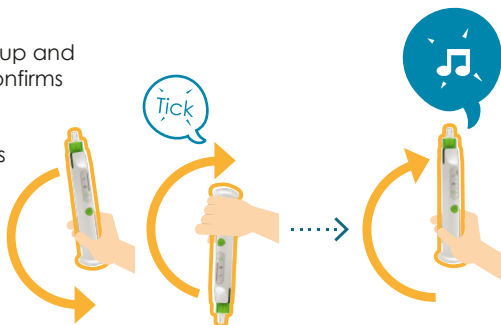
Wait until you hear **2** loud beeps and the entire progress bar flashes.

5

Turn the auto-injector up and down

Turn the auto-injector up and down. A tick sound confirms the turns are correct. Turn 5 to 10 times until you hear **2** loud beeps and the progress bar, except the top element, lights up.

Do not press the green button.



6

Finish mixing

Keep upright until you hear **2** loud beeps and the entire progress bar lights up.



6.1



Pull off needle cover.

Do not twist.

Keep needle cover for later.

(Eye icon  will light up)

6.2



Inject

7

Check mixed medicine

Medicine is ok to use if it is colorless and clear (some air bubbles are ok).
Go to Step 8.

Do not use the mixed medicine if it has visible particles. Press the green button for **3** seconds and go to Step 10.



8

Prepare for injection

8.1

Choose an injection site:
Stomach (abdomen),
thighs, or buttocks.
Change the injection site for
every injection.

Front



Stomach (abdomen)
Thighs

Back



Buttocks

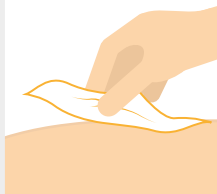
8.2

Wash hands.



8.3

Clean injection
site with alcohol
wipe. **Do not**
inject through
clothes.



9

Inject medicine

9.1

Press and hold
green top against
the injection site for
10 to 15 seconds
until you hear **2**
loud beeps.

(Green top
will flash **2** times
and check
mark icon ✓
will light up)



9.2

Remove the
auto-injector
from skin and
wait until you
hear **2** loud
beeps.

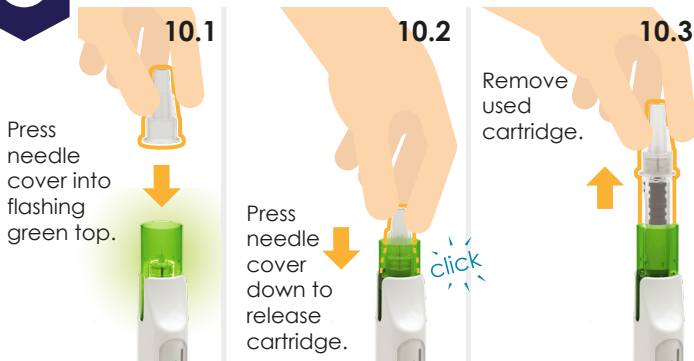
(Green top
will start
flashing)



After injection

10

Remove cartridge



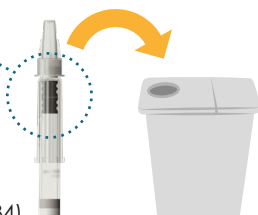
11

Check cartridge and throw away

Check that cartridge is empty.

Put used cartridge and needle in a sharps disposal container.

(More info:
See Instructions for Use - page 34)



Does your weekly dose require 2 cartridges?

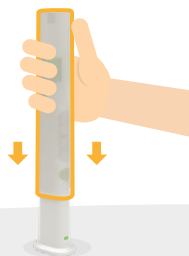
Then take the second injection by repeating Step 1 to Step 11 with a new cartridge and needle before continuing to Step 12.

12

Store the auto-injector

Put on the protective cover.

Store at room temperature
between 59°F to 86°F (15°C to 30°C),
to be ready for next use.

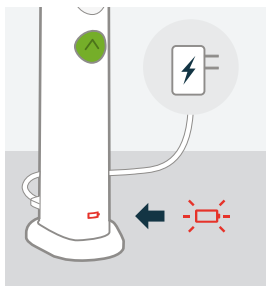


Quick troubleshooting

For more detailed information, see Instructions for Use (IFU).

Charging required (Step 2)

■ IFU page 45



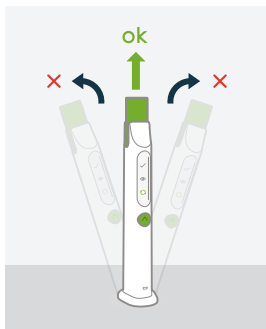
If the battery level is low:

⚠ You will see a flashing red battery icon.

Do this: Insert charger cable into the SKYTROFA Auto-Injector at rear lower side and connect to a power outlet.

SKYTROFA Auto-Injector not upright (Step 4 and 6.1)

■ IFU page 42



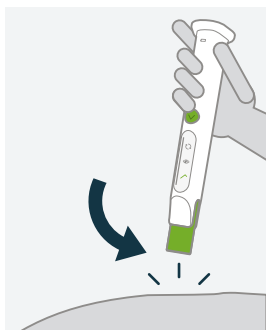
If the SKYTROFA Auto-Injector is not in an upright position during mixing and air removal:

⚠ You will hear a repeating warning sound. Mixing icon will flash slowly and progress bar will freeze.

Do this: Place the SKYTROFA Auto-Injector in an upright position and the mixing or air removal will continue.

Skin contact lost (Step 9)

■ IFU page 43



If the green top is removed from skin before the injection is complete:

⚠ You will hear a repeating warning sound. Check mark icon will flash slowly and progress bar will freeze.

Do this: Press green top against skin and the injection will continue.